

## WV Online CM Pilot Project

### Computer Setup Instructions

*Revised Feb. 19*

#### 1. Computer Hardware/Workstation

Required: Review Computer Configuration Requirements manual to check computer for Windows Operating System and various setup details

Required: Review Mobile Assessments manual for device and internet browser compatibility

#### 2. Internet

Required: Internet Explorer (IE) browser version 11 for WellSky application

Recommended: Chrome for Mobile Assessments

Recommended: Internet options for tab display, delete browsing history (see next pages)

#### 3. Web addresses (URLs)

Recommended: Bookmark as favorite in Internet browser

Live database: <https://fw1.harmonyis.net/WVLive/>

Mobile assessments: <https://fw1.harmonyis.net/wv-live-assessments/>

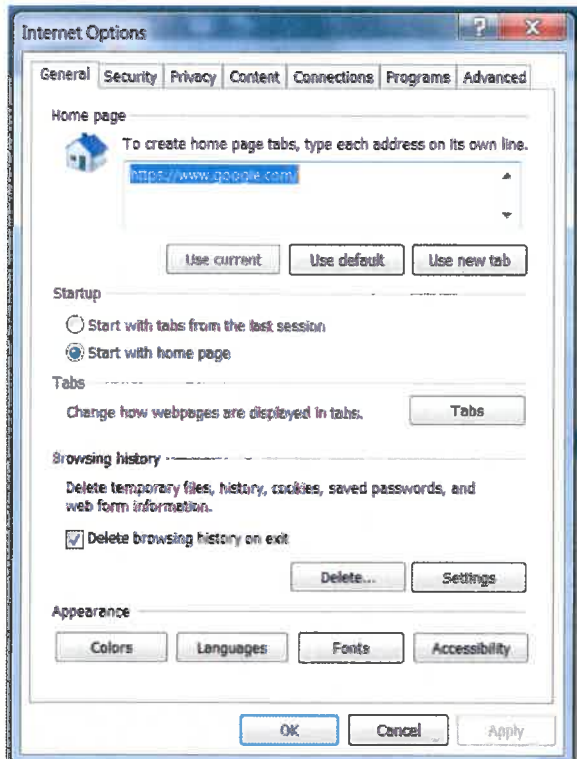
#### 4. Login Password for WellSky

Required: Minimum of 8 characters including all 4 types (capital, small, number, and special)

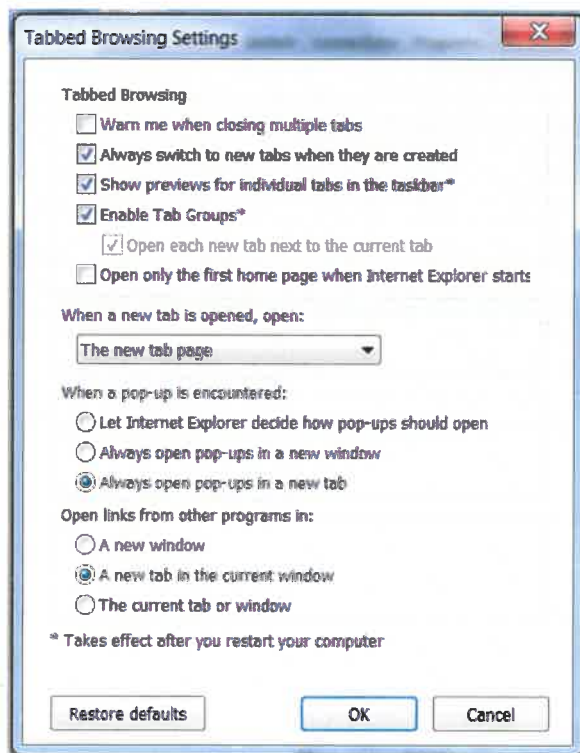
Required: Reset own password every 60 days (no re-use)

Note: Contact BMS/BoSS if password unknown or account locked due to 5 unsuccessful entries

## Internet Options



## Tabs



## Browsing History - Delete

